



REQUEST FOR PROPOSAL (RFP)
THE BOARD OF EDUCATION OF THE TOWNSHIP OF UNION
CIVIL ENGINEERING SERVICES

SUBMITTED TO:

MR. MANUEL E. VIEIRA
INTERIM BOARD SECRETARY
2369 MORRIS AVENUE
UNION, NEW JERSEY 07083

BY

THE REYNOLDS GROUP, INC.
626 NORTH THOMPSON STREET
RARITAN, NEW JERSEY 08869
(908) 722-1500

MARCH 14, 2016

TABLE OF CONTENTS

Section A – Letter of Transmittal and Trade References	2
Section B – Executive Summary & Firm’s Breadth of Experience	3
Section C – Organizational Chart	5
Section D – Professional Credentials – Team Members	6
<u>Resume:</u>	
F. Mitchel Ardman, Principal-In-Charge	7
Jeffrey D. Reynolds, Vice President	8
Adonis E. Crispo, Project Engineer	9
Lynne M. Krauser, Project Engineer	10
David C. Coleman, Director of Land Surveying	11
Henry E. Reynolds, Jr.	12
<u>Sample Projects:</u>	
Academy Learning Center – Monroe Township	13
Bragg & Dickerson Schools – Chester Township/Borough	14
East Brook Middle School – Paramus Township	15
Ridge Ranch – Media Center	16
Partial List of Charter/School Projects Specifics	17
Section F – Rate Schedule	20
Section G – Certificate of Employee Information Report (AA) and Business Registration Certificate	24

SECTION A – LETTER OF TRANSMITTAL AND TRADE REFERENCES

3/11/2016

THE BOARD OF EDUCATION OF THE TOWNSHIP OF UNION
MR. MANUEL E. VIEIRA
INTERIM BOARD SECRETARY
2369 MORRIS AVENUE
UNION, NEW JERSEY 07083

Dear Mr. Vieira:

The Reynolds Group, Inc. (TRG) was founded in 1992 in Bridgewater, NJ. For over 25 years, we have provided civil engineering, land surveying, environmental permitting and landscape architecture services to various private and public secondary and higher level educational institutions across New Jersey.

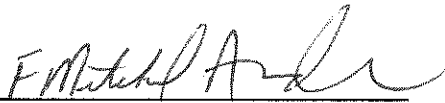
Those project scopes have included boundary and topographic surveys, site, roadway, drainage and sanitary sewer designs, wetlands delineations and New Jersey Department of Environmental Protection (NJDEP) permitting, municipal and county approvals, design and construction stake out, estimating, administration and inspection and survey as-builts.

Our project teams take great pride in their subject matter knowledge and experience and the ability to meet our client's needs, while working within a very complex regulatory and approval process. Our smaller size (SBE) and industry knowledge allows us to provide a very personal, responsive and creative approach to meeting our client's requirements.

Please feel free to contact me regarding our firm's qualifications:

F. Mitchel Ardman, PE, PP - President
The Reynolds Group, Inc.
626 North Thompson Street
Raritan, NJ 08869
Office: (908) 722-1500
Fax: (908) 722-7035
Email: mardman@reynoldsgroup.com

Respectfully,



F. Mitchel Ardman, PE, PP
President

SECTION B – EXECUTIVE SUMMARY & FIRM’S BREADTH OF EXPERIENCE

The Reynolds Group, Inc. approaches each project as an advocate for our client’s goals and success. With that mindset, we use our professional engineering experience, our understanding of municipal, state and federal permitting and our industry relationships to plan and execute the appropriate project plan for success. We welcome projects that challenge the status quo and allow us to be creative in our design approach.

Each project is assigned a project manager and team that remain consistent throughout the project life cycle and across your different projects. This insures team members are knowledgeable about your specific requirements and needs, the details and history of your work, and are able therefore to respond rapidly and efficiently to project questions or issues that may arise.

In addition to providing professional engineering and land surveying services to many secondary level educational clients such as The Lawrenceville School, Bridgewater – Raritan School District, The Reynolds Group, Inc. also has extensive experience with university level educational institutions such as Rutgers, Rider Westminster Choir College and Drew University.

We currently have open purchase orders for many secondary schools as well as on call services agreement with Rutgers University and Union County College for engineering and land surveying services

The Reynolds Group, Inc. has the experience and staff to provide site/civil engineering; lighting, landscape architecture, traffic, storm water, waste water and any other ancillary services such as land surveying to the Union County School District.

We understand not only the technical parts of the work but the regulatory process as well. The Reynolds Group has obtained environmental approvals at all levels of regulatory review, including the Municipal and County levels as well as from the New Jersey Department of Environmental Protection and the United States Army Corps of Engineers. Permit approvals obtained include the various types of Letters of Interpretation, General Freshwater Wetland Permits, Individual Freshwater Wetland Permits, various types of Transition Area Waivers, and Flood Hazard Permits. Various approvals have also been obtained from the New Jersey Meadowlands Commission, the New Jersey Pinelands Commission, and the Delaware and Raritan Canal Commission

The Reynolds Group has developed a reputation of successfully guiding clients through the permitting process. Our strong relationships with state and local regulatory agencies have enabled us to facilitate permit acquisition and conduct negotiations on behalf of our clients.

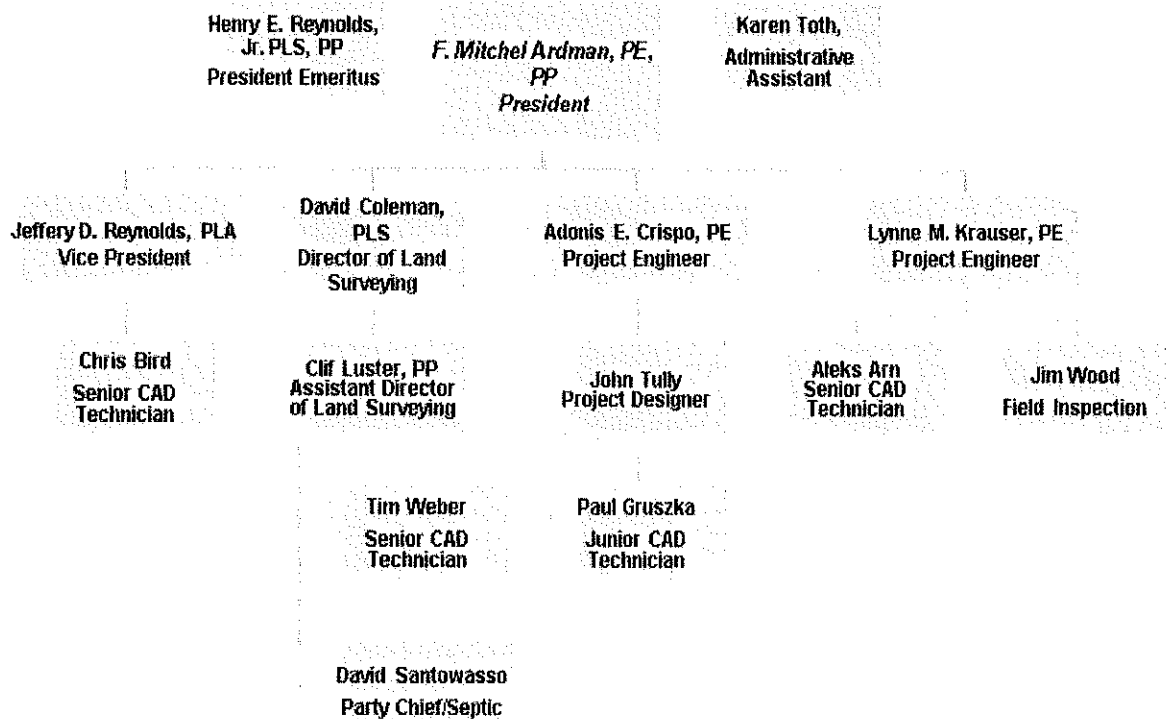
The Reynolds Group's experience includes:

- NJ Department of Environmental Protection and United States Army Corps of Engineers Wetlands Approvals
- NJ Pinelands Commission Approvals
- New Jersey Meadowlands Commission Approvals
- Wetland Mitigation Services; including Creation, Restoration, and Enhancement
- Implementation of Wetland Monitoring Programs
- Coordination with various Regulatory Agencies
- A working relationship with NJDEP personnel
- Innovative water quality methods
- Water Quality Certification Coordination
- Minimization of Impacts
- Alternatives Analysis
- Utilization of 30-day permits for rapid project approvals

SECTION C – ORGANIZATIONAL CHART

The Reynolds Group, Inc.

March 2016



SECTION D – PROFESSIONAL CREDENTIALS – TEAM MEMBERS

The Project Manager and lead contact for TRG, directing and leading the work would be:

F. Mitchel Ardman, PE, PP

New Jersey Engineer - No. 24GE03431700

Pennsylvania Engineer – No. 43566-R

US Virgin Islands – No. 1230E

New Jersey Planner – 33LI0449600

Team Members:

Adonis E. Crispo, PE

New Jersey Engineer - No. 24GE04415200

Philippines Engineer – No. 0042701 Civil Engineer

Philippines Engineer – No. 0001174 Sanitary Engineer

Lynne Krauser, PE

New Jersey Engineer - No. 24GE03893300

Jeffery D. Reynolds, PLA

New Jersey Landscape Architect - No. 21AS00087800

David C. Coleman, PLS

New Jersey Professional Land Surveyor - No. 24GS35826

Arkansas Professional Land Surveyor – No. 1102

Henry E. Reynolds, PLS, PP

New Jersey Professional Land Surveyor - No. 24GS1482000

New Jersey Planner – 33LI00306600