

**Wiggins, Tom**

---

**From:** JACwikla [JACwikla@potterarchitects.com]  
**Sent:** Thursday, May 09, 2013 10:47 AM  
**To:** Wiggins, Tom  
**Subject:** C5 LED Sign  
**Importance:** High  
**Attachments:** LED\_Sign.pdf; Sign Drawings.pdf

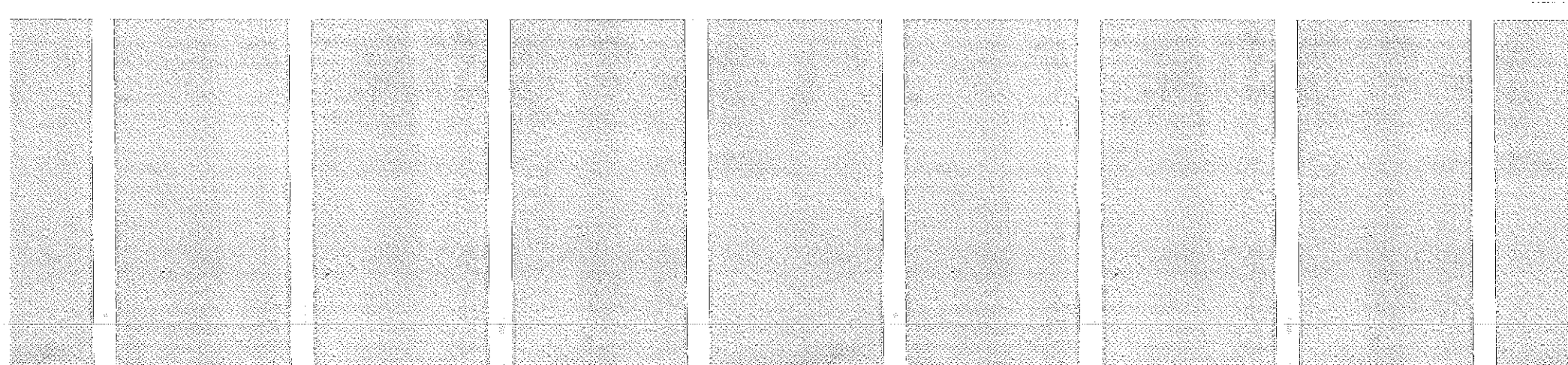
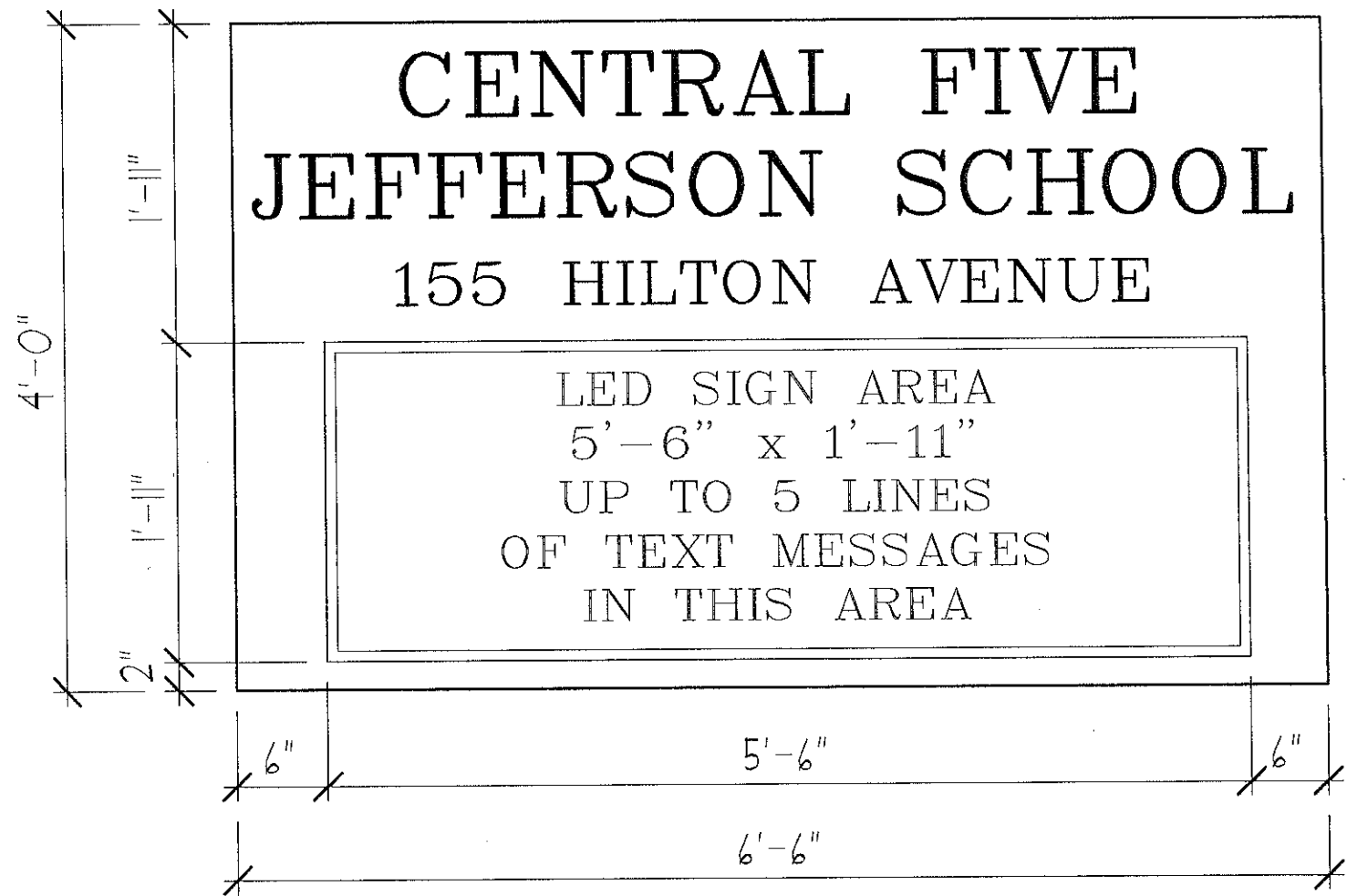
Tom,

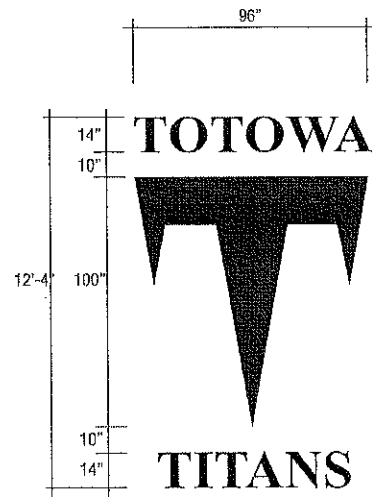
Attached is the layout for the LED sign that will sit out in front of the building near the new flagpole. It is mounted on (2) tubular posts.

Page 2 of the sign drawing PDF shows a similar sign to what I have shown.

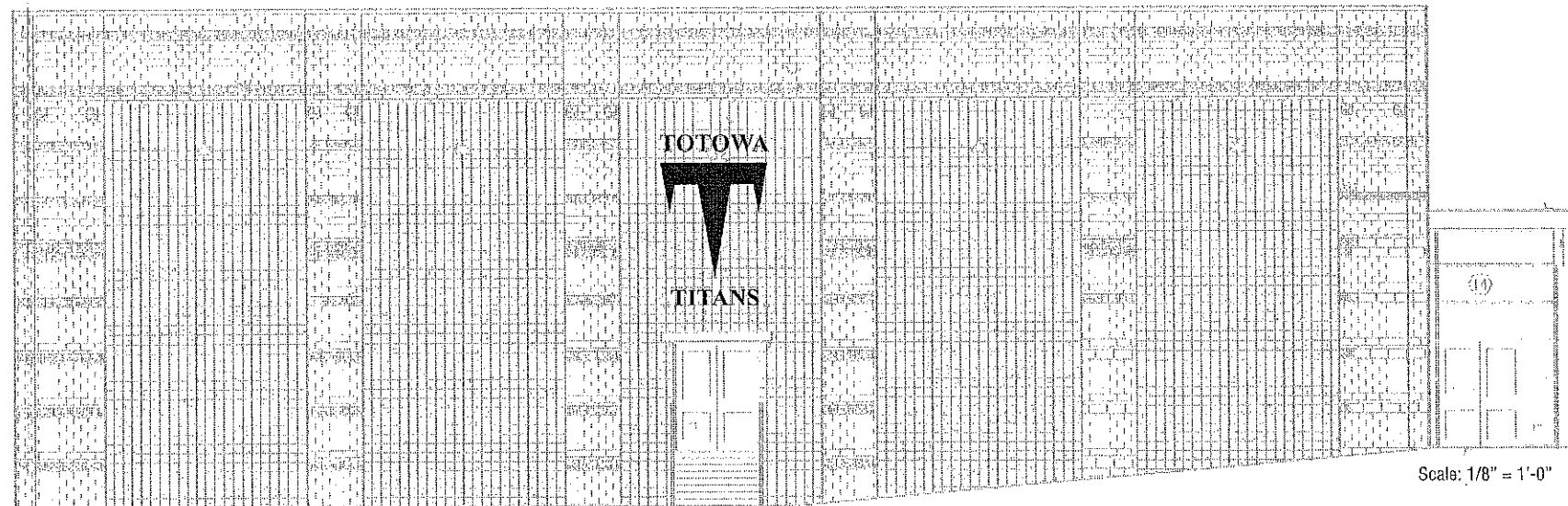
Let me know if you want to move forward with this sign or not so I can let Patock know.

John





Scale: 1/4" = 1'-0"



Scale: 1/8" = 1'-0"

**TOTOWA TITANS**

Drawn by: MR  
 Scale: as noted  
 Date: 5/23/07  
 Revised:

Education, Totowa Titans, Sign Drawings

**Halo Lit Fabricated Logo & Letters**

Product Code: Fabricated reverse channel letters & custom logo

Type: 10"H Times New Roman

Logo Size: 100"

Letter Color: Black

"T" Logo Color: Red

Mounting Method: Stud into brick masonry

Mounting Details: TBD

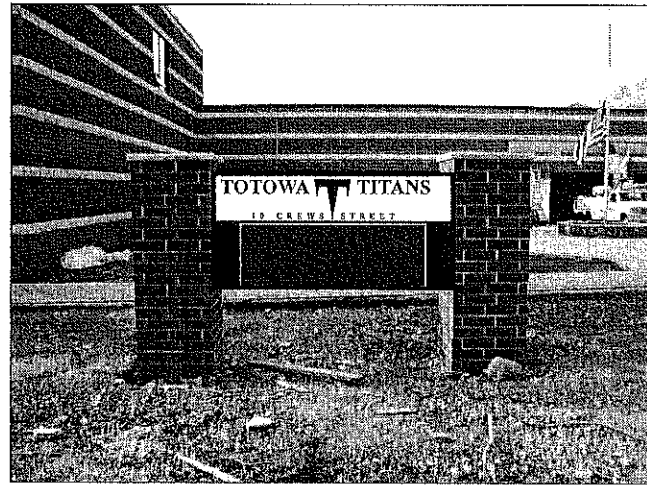
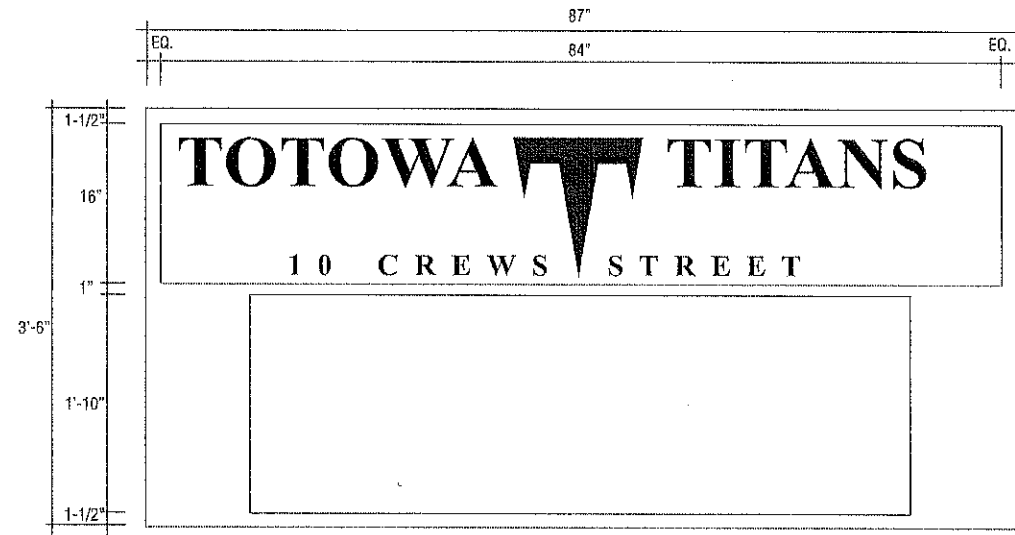
Approval Date

Client's Signature



352 Washington Avenue  
 Carlisle, NJ 07072  
 201-939-5577 FAX 201-939-7043

THIS DOCUMENT IS THE EXCLUSIVE PROPERTY OF DESIGNER SIGN SYSTEMS, CARLISLE, NEW JERSEY, AND MAY NOT BE COPIED, REPRODUCED, MANUFACTURED, MARKETING OR SOLD, BY WHOLE OR IN PART WITHOUT THE EXPRESS WRITTEN CONSENT OF DESIGNER SIGN SYSTEMS.



**LED SPECIFICATIONS:**

- Outdoor VCI-SS17mm 32x96 w/266 shades in Red or amber
- Display Dimensions: 1'-10"H x 5'-6"W Weight: 92 lbs
- This display is capable of displaying one to five lines of text with 26 operating modes, and schedule up to 80 messages up to a year in advance
- Max power Draw for the LED is 5.53 Amps on 115V, so a minimum of a 15amp service will be recommended for both the fixed signage and the LED display.
- When running ethernet and power to the display, VCI recommend running each in a separate conduit at least 12" apart until the tow conduits meet at sign pole. When facing the front of the display, run both power and data up to the pole on the right hand side.

**TOTOWA TITANS**

Drawn by: HR  
 Scale: 1" = 1'-0"  
 Date: 5/23/07  
 Revised:

Education: TOTOWA TITANS, Sign Drawings

**Illuminated Sign Box w/LED display**

Product Code: Fabricated aluminum sign w/internally illuminated header panel and LED display

Cabinet Size: 42"H x 87"W x 12"D

LED display size: 1'-10"H x 5'-6"W

Typestyle: Times New Roman

Mounting Method: Side channels

\* sizes to be verified by DSS/LED manufacturer

Approval Date

Client's Signature



352 Washington Avenue  
 Carlstadt, NJ 07072  
 201-939-5577 FAX 201-939-7043

THIS DOCUMENT IS THE EXCLUSIVE PROPERTY OF DESIGNER SIGN SYSTEMS, CARLSTADT, NEW JERSEY, AND MAY NOT BE COPIED, REPRODUCED, MANUFACTURED, ADAPTED OR SOLD, IN WHOLE OR IN PART WITHOUT THE EXPRESS WRITTEN CONSENT OF DESIGNER SIGN SYSTEMS.